



FRIDAY ROUND UP

16th February 2024



CELEBRATING CHILDREN'S WRITING

Year 3 have enjoyed reading and writing monster poems this week. Here is Edward's wonderful poem called The Flame Monster!

The Flame Monster - By Edward Year 3

*Glowing red eyes like glowing blood
Skin as hard as bone,
His hair aflame,
Which is easy to tame,
The monster all dressed in black.*

*He kills you with his feet,
He wears black as disguise at night,
He has a sharp spike to kill you as he walks,
This monster all dressed in black.*

*Every night he comes out of his lair,
To stare in to see if you look tasty,
If you do, he comes back to his lair to eat you alive,
This horrible monster all dressed in black.*

*Beware this monster is more scary than he looks,
I've told you enough about this flame monster,
So next time you go to sleep,
Hide under your sheets,
So he doesn't know you're there.
This disgusting monster all dressed in black.*

FABRIC ART



Using the Tropical Rainforest environment as a starting point, pupils in year 3 developed drawings though experimentation and textile based techniques to design a repeating pattern suitable for fabric.



E-SAFETY: OFCOM AND THE ONLINE SAFETY ACT 2023 – HAVE YOUR SAY

Ofcom are currently consulting on codes of practice which outline how online services should meet their new duties from the Online Safety Act. You can have your say by clicking on the following link. The consultation period ends at 5pm on 23rd February.

<https://www.ofcom.org.uk/news-centre/2024/why-size-and-risk-matter-in-our-approach-to-online-safety>

SEND HINTS AND TIPS FROM
MISS .TAVENDER

Emotional Deregulation

It is very common for children to find it hard to communicate their feelings, this is especially true when a child emotionally deregulates. The use of an emotion scale can really help with allowing children express their feelings and you as an adult to understand what's happening.

Here is an example of a simple emotional scale. The child would then indicate with a point or by placing a picture on the appropriate part.

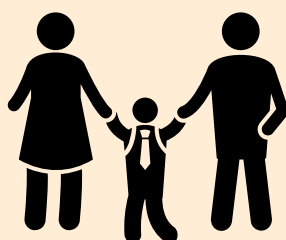
SEND IS EVERYONE'S BUSINESS



Parking around the school

There have been ongoing concerns raised by parents and members of the community about the way in which some parents are choosing to park around the school. There have been several occasions where parking has been dangerous or blocking resident driveways etc. We would like to remind all parents and carers to park safely and responsibly.

Please consider everyone else around you during drop off and pick up times.



RSE Parent Consultation

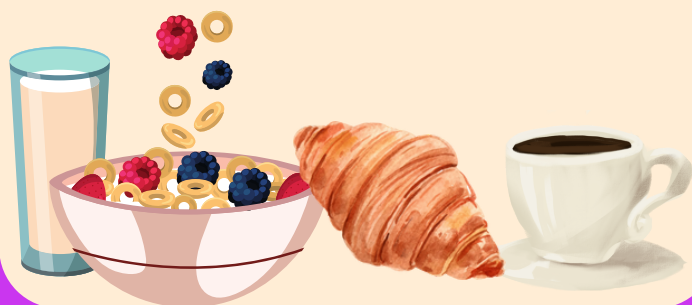
We are currently reviewing the school's Relationship and Sex Education (RSE) Policy. Parents are invited to attend a consultation about the policy after school on Tuesday 5th March. Please Dojo Miss Sibson if you wish to attend.

BIG BREAKFAST

The Spring Term **BIG BREAKFAST** will be running on **Friday 8th of March** from 8am in the school hall.

This is a wonderful St Anne's community event and always popular with our families.

We look forward to seeing you there.



World Book Day

World Book Day is on **Thursday 7th of March** this year. Class 3 will be holding their class assembly on this day and Mr Rhodes is planning some whole school fun to celebrate the world of books.

We will be letting you know more closer to the time but probably best to be planning a World Book Day costume now!



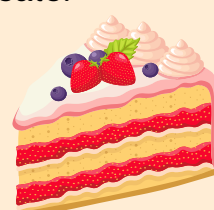
WORLD
**BOOK
DAY**

Red Nose Day

The school is looking forward to celebrating **Red Nose Day on Friday 15th March.**

Children will be able to come to school wearing something RED and make a £1 donation towards this charity.

After school we will be running a cake sale and will be asking for your wonderful cake donations. Alongside this there will be a second hand uniform sale.



Happy Half Term!

From all at St Anne's, we wish you a very happy half term break and look forward to seeing you all again on **Monday 26th of February**

REMINDERS

25th Feb - 29th Feb - Yr 6 Bikeability

28th Feb - 29th Feb - Parent consults (**note date change**)

5th March - Relationship and Sex Education Parent Consultation

7th March - World Book Day

8th March - BIG Breakfast - 8am school hall

